



# KIDSCOPE Community Paediatric Clinic 2010-2023

LYNN BUCKLEY, LET'S GROW TOGETHER & UNIVERSITY COLLEGE CORK



## WHAT IS KIDSCOPE?

Established in 2010, KIDSCOPE is a consultant-led, multi-stakeholder community paediatric clinic in the northwest sector of Cork city. Three main aims of the clinic are: to provide assessment, treatment, and onward referral to children aged 0 to 6 years with health and developmental concerns; to improve child outcomes by providing a wrap-around system of care for vulnerable families; and to act as a teaching clinic for medical students attending University College Cork. Delivered in partnership with local services, KIDSCOPE's inter-disciplinary team is comprised of paediatricians, medical students, community medical doctors, public health nurses, speech and language therapists, and practitioners from local agencies Let's Grow Together, NICHE Health Project, and Springboard Child & Family Support Service.



## WHY IS KIDSCOPE IMPORTANT?

Cork city northwest has a history of significant levels of deprivation with many areas classed as 'extremely disadvantaged' [1]. Children are underachieving in developmental domains and experiencing poor educational and health outcomes [2]. Studies show children who grow up in disadvantage and experience adversity in their early years are at much greater risk of poor physical, mental, social, educational, and economic outcomes [3]. A considerable proportion of developmental delay is avoidable and early detection and intervention can improve child development [4]. Early intervention disability services in Ireland are significantly disjointed [5]. Families from more affluent backgrounds access early intervention services faster through paid private assessment and intervention [6]. A gap in the system exists for families from disadvantaged areas who do not have the resources to access services. Providing high-quality and timely health and developmental assessment within a vulnerable community, Kidscope intercepts the gap within Ireland's early intervention system



## WHAT DOES THE RESEARCH TELL US?

### KIDSCOPE.....

1. Increases access to healthcare for vulnerable children.
2. Detects developmental disorders earlier than the alternative progressing disabilities pathway.
3. Refers children to primary care and early intervention services in a more timely manner.
4. Empowers vulnerable families through enhancing knowledge of child health and development and encouraging them to become active agents in their child's health.
5. Provides a unique community-based training opportunity for undergraduate medical students.
6. Supports the work of health and child & family support practitioners in Cork city northwest through education and knowledge sharing.
7. Encourages collaborative, inter-disciplinary working between paediatricians and a range of primary care and child and family support practitioners.
8. Addresses and supports the healthcare needs of the most vulnerable children by successfully engaging families through relational working and a child and family-centred model of care.



## WHAT ARE THE IMPLICATIONS OF THE RESEARCH?

110,000 children are currently waiting for early intervention and primary care services in Ireland [7]. Such significant waitlists are a concern to families, service providers, and policymakers. If developmental delay is not treated on time, it can have a detrimental impact on children's developmental trajectories and can incur significant costs to the State [8]. This research unequivocally demonstrates the role, model, and impact of KIDSCOPE. For children and families to continue to receive the benefits of KIDSCOPE, the service must be maintained, fully funded, supported, mainstreamed, and integrated into paediatric healthcare policy. Findings can be used to influence policymakers to consider the replication of the KIDSCOPE model in order to intercept the ever-widening gap in the early intervention system and to help ameliorate the impacts of unnecessary developmental delay.

# RESEARCH

'THE KIDSCOPE STUDY' PHD PROJECT CONSISTED OF 5 SUB-STUDIES EXAMINING HOW KIDSCOPE ADDRESSES AVOIDABLE DEVELOPMENTAL DELAY AND THE VALUE OF THE CLINIC TO CHILDREN, FAMILIES, AND SERVICES IN THE CORK CITY NORTHWEST COMMUNITY.



## RESULTS

### The Implementation Processes

-  DEVELOPMENT
-  RESOURCING
-  COORDINATION
-  CLINIC DELIVERY
-  CHILD & FAMILY CARE PLAN
-  EDUCATION
-  CLINIC REVIEW & SUSTAINABILITY
-  FOLLOW-UP SUPPORT & CARE

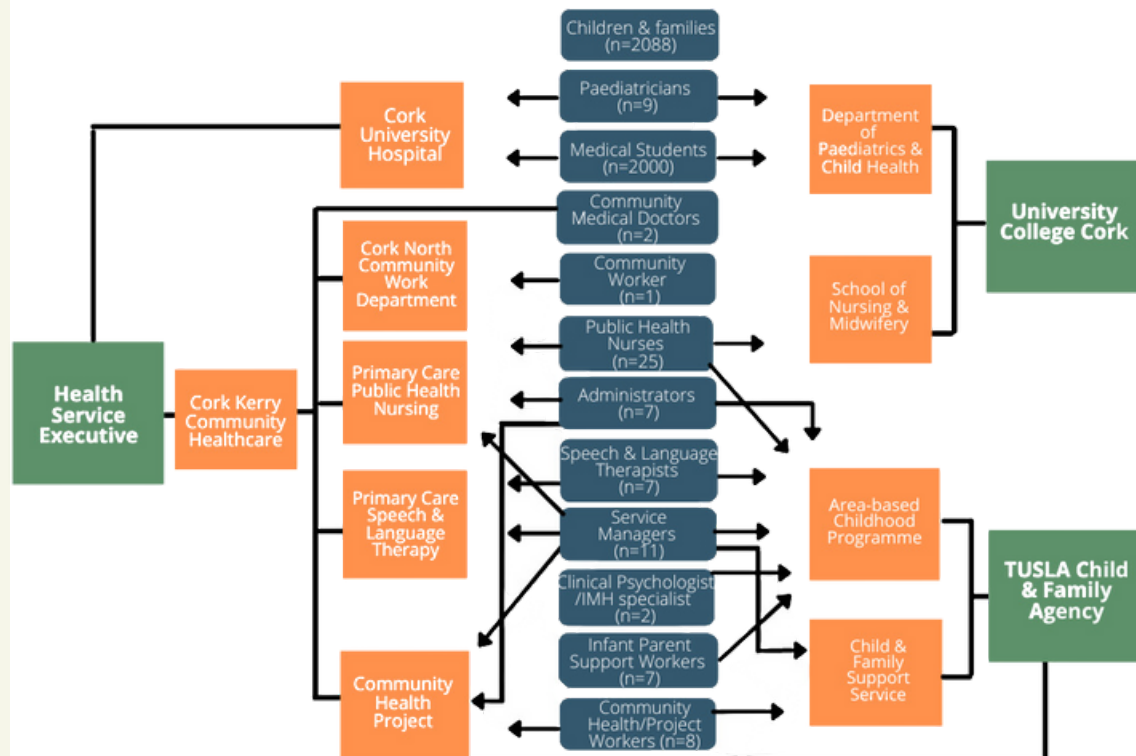


## The Literature

REVIEW, APPRAISAL, AND SYNTHESIS OF 18 PRIMARY RESEARCH STUDIES ON COMMUNITY PAEDIATRIC CLINICS IMPLEMENTED IN THE UNITED STATES, ENGLAND, CANADA, AND AUSTRALIA YIELDS STRONG EVIDENCE SHOWING COMMUNITY PAEDIATRIC CLINICS:

- REDUCE HEALTH INEQUALITIES
- SUCCESSFULLY ENGAGE VULNERABLE CHILDREN AND THEIR FAMILIES WITH FAMILIES CITING EASE OF ACCESS, EDUCATION ON BEHAVIOURAL AND DEVELOPMENTAL PROBLEMS, AND LIAISON VALUES AS COMMON ADVANTAGES OF ATTENDING
- FACILITATE THE STRENGTHENING OF WORKING RELATIONSHIPS BETWEEN MEDICAL PRACTITIONERS AND COMMUNITY AGENCIES
- AID THE DETECTION, MONITORING, AND TREATMENT OF CHILDHOOD DEVELOPMENTAL DELAY
- PROVIDE DISADVANTAGED COMMUNITIES WITH ACCESSIBLE SPECIALIST KNOWLEDGE OF CHILD HEALTH AND DEVELOPMENT
- HEIGHTEN COMMUNITY AWARENESS OF CHILD DEVELOPMENT
- INCREASE PARENT AND PROFESSIONAL CHOICE

## The People





2,088 CHILDREN AND FAMILIES  
CARED FOR & SUPPORTED  
SINCE 2010

# The Outcomes



EXPEDITES WAIT TIMES TO  
PRIMARY CARE & EARLY  
INTERVENTION SERVICES FOR  
VULNERABLE CHILDREN

DETECTS DEVELOPMENTAL DELAY  
& DISORDERS EARLIER THAN  
ALTERNATIVE PROGRESSING  
DISABILITY SERVICES



KIDSCOPE HAS DEVELOPED A  
COALITION OF COMMUNITY  
PRACTITIONERS TO DELIVER A  
WRAP-AROUND SYSTEM OF CARE



DELIVERED & SUPPORTED BY 80  
PRACTITIONERS FROM 9 ORGANISATIONS  
ACROSS 3 SYSTEMS HEALTH, ACADEMIA &  
CHILD+FAMILY SUPPORT SERVICES



MULTI-AGENCY, INTER-DISCIPLINARY  
TEAM EMPLOYS A CHILD & FAMILY-  
CENTRED MODEL OF CARE TO  
SUCCESSFULLY ENGAGE VULNERABLE  
FAMILIES



KIDSCOPE UTILISES THE STRENGTHS  
OF LOCAL SERVICES TO DELIVER  
HIGH-QUALITY, HOLISTIC  
APPROACHES TO CHILD HEALTH  
DIFFERENT TO THAT OF TRADITIONAL  
HOSPITAL-BASED CLINICS



EDUCATED 2,000  
MEDICAL STUDENTS  
SINCE 2010, 168 PER YEAR



PROVIDES A UNIQUE MODEL OF  
COMMUNITY MEDICAL  
TEACHING THAT CAN BE  
REPLICATED ACROSS CLINICAL  
FIELDS



PROVIDES VALUABLE EDUCATIONAL  
OFFERINGS AND KNOWLEDGE SHARING  
OPPORTUNITIES TO LINKED  
PRACTITIONERS



# The Voices

"THIS WAS COMPLETELY DIFFERENT  
TO OTHER APPOINTMENTS,  
STRAIGHT AWAY THERE WAS MORE  
UNDERSTANDING OF MY SON'S AND  
MY FAMILY'S NEEDS"  
PARENT 8

"THEY KNOW MY SON SO WELL  
NOW...THE DOCTOR HELPS US  
UNDERSTAND WHAT HE STRUGGLES  
WITH AND THE SPEECH AND LANGUAGE  
THERAPIST IN THE CLINIC GAVE ME TIPS  
TO WORK ON HIS LANGUAGE AT HOME"  
PARENT 3

"WE DO OUR BEST TO PROVIDE PARENTS  
WITH THE KNOWLEDGE TO BECOME ACTIVE  
AGENTS IN THEIR CHILD'S HEALTH AND  
DEVELOPMENT"  
PUBLIC HEALTH NURSE

"IT'S JUST DOWN THE ROAD,  
IT'S GREAT. IT WAS REALLY  
WELCOMING AND THEY WERE  
SO HELPFUL"  
CAREGIVER 10

"IT'S A HUGE EFFORT BY  
COMMUNITY PRACTITIONERS.  
FAMILIES ARE SUPPORTED AS  
BEST AS POSSIBLE AND RETURN  
TO KIDSCOPE TO CONTINUE THE  
CARE THEY NEED"  
PAEDIATRICIAN

"WE GOT ADVICE FROM THE DOCTOR AT THE CLINIC  
BUT THE PHN IN KIDSCOPE RANG THE FOLLOWING  
DAY AND AGAIN ABOUT ONCE A WEEK AFTER THAT  
TO SEE HOW WE WERE GETTING ON"  
CAREGIVER 7

"BY COMING TOGETHER, BASELINE  
ASSESSMENTS ARE NOW COMPLETED  
BY MULTIPLE DISCIPLINES IN  
KIDSCOPE, EXPEDITING THE PROCESS  
FOR CHILDREN"  
SPEECH & LANGUAGE THERAPIST

"KIDSCOPE HAS HELPED MY FAMILY SO  
MUCH. I CAN SAFELY SAY I WOULD HAVE  
BEEN LOST WITHOUT IT. I HAVE FRIENDS  
IN OTHER AREAS WHO ARE WAITING 2 AND  
3 YEARS FOR SIMILAR SERVICES. I THANK  
GOD EVERYDAY WE HAVE DR GIBSON &  
KIDSCOPE ON OUR DOORSTEP"  
PARENT 5

"WE LEARN SO MUCH AS  
PRACTITIONERS, THIS IMPACTS OUR  
WHOLE WAY OF WORKING WITH  
OTHER FAMILIES IN THE COMMUNITY  
TOO"  
INFANT PARENT SUPPORT WORKER

# RECOMMENDATIONS

## KEY LEARNING FROM THE EVIDENCE



### Policy

**Better Outcomes, Brighter Futures:** 'investment in the early years, and in prevention and early intervention, particularly for vulnerable groups' [9].

**Progressing Disability Services for Children & Young People:** 'access to services is equitable, children are seen nearest their home, no child is left without timely access to appropriate services' [10].



**Slaintecare:** 'Health and social care services in Ireland must be delivered in an integrated manner, as close to the person's home as possible' [11].

**National Model of Care for Paediatric Healthcare Services in Ireland:** 'All children should be able to access safe, high quality services in an appropriate location, within an appropriate timeframe' [12].

### Interdisciplinary Community Clinic Teams

Enhance opportunities for consultant paediatricians linked with HEIs to use teaching hours to deliver community clinics.

Enhance opportunities for local network disability teams, primary care teams, and community & voluntary child and family support services to offer professional expertise and resources to community clinics.

Ensure community clinical training is a feature of undergraduate medical curricula to develop the expertise of future paediatricians and physicians, and to ensure they experience working with and for communities.



"THERE CAN BE NO KEENER REVELATION OF A SOCIETY'S SOUL THAN THE WAY IN WHICH IT TREATS ITS CHILDREN"

NELSON MANDELA

### Community Buy-in

Increase funding and resources to existing community child & family support services to facilitate collaboration with clinics, to house clinics, provide administrative hours, and refer families into their services.



### Delivery and Sustainability

Eight areas of 'extreme disadvantage' in Ireland. Clinics should be prioritised in each of these areas, building on existing services and child & family support services.

A relational approach is essential. Clinic staff upskilled in Infant Mental Health, trauma-informed approaches to working with vulnerable communities.

Funding for clinics must be ringfenced to ensure continued and sustained delivery and integration of services.



To access papers and outputs from The KIDSCOPE Study

FOR MORE INFORMATION VISIT:  
[WWW.LETSGROWTOGETHER.IE](http://WWW.LETSGROWTOGETHER.IE)  
 CONTACT: LYNN BUCKLEY  
 TEL: +353 85 1646936  
 E: 105437687@UMAIL.UCC.IE

### REFERENCES

1. POBAL (2019) SMALL AREA POPULATION STATISTICS. [HTTPS://DATA.GOV.IE/DATASET/POBAL-HP-DEPRIVATION-INDEX](https://data.gov.ie/dataset/pobal-hp-deprivation-index)
2. BUCKLEY L AND CURTIN M (2018) LEARNING TOGETHER: YOUNG KNOCKNAHEENY PROCESS EVALUATION, 2015-17. CORK: YOUNG KNOCKNAHEENY ABC PROGRAMME.
3. KOMRO KA, TOBLER AL, DELISLE AL, ET AL. (2013) BEYOND THE CLINIC: IMPROVING CHILD HEALTH THROUGH EVIDENCEBASED COMMUNITY DEVELOPMENT. BMC PEDIATRICS 13(1): 1. DOI: 10.1186/1471-2431-13-172
4. LEVENTHAL T AND BROOKS-GUNN J (2000). THE NEIGHBOURHOODS THEY LIVE IN: THE EFFECTS OF NEIGHBOURHOOD RESIDENCE ON CHILD AND ADOLESCENT OUTCOMES. PSYCHOLOGICAL BULLETIN 126(2): 309-337. DOI: 10.1037/0033-2909.126.2.309
5. HSE (2016) NATIONAL POLICY ON ACCESS TO SERVICES FOR CHILDREN & YOUNG PEOPLE WITH DISABILITY & DEVELOPMENTAL DELAY. HEALTH SERVICE EXECUTIVE. AVAILABLE AT: [HTTP://WWW.DISABILITYAWARENESS.IE/IMAGES/DOCUMENTS/ACCESSPOLICYWITHDISABILITYDEVELOPMENTALDELAY.PDF](http://www.disabilityawareness.ie/images/documents/accesspolicywithdisabilitydevelopmentaldelay.pdf)
6. CARROLL C, MURPHY G, SIXSMITH J (2013) THE PROGRESSION OF EARLY INTERVENTION DISABILITY SERVICES IN IRELAND. INFANTS AND YOUNG CHILDREN 26: 17-27. DOI: 10.1097/IVC.0B013E3182736C65
7. IRISH TIMES (2022) MORE THAN 110,000 CHILDREN ON WAITING LISTS FOR THERAPIES AND DISABILITY SERVICES. [HTTPS://WWW.IRISHTIMES.COM/HEALTH/2022/08/18/MORE-THAN-110000-CHILDREN-ON-WAITING-LISTS-FOR-THERAPIES-AND-DISABILITY-SERVICES-FIGURES-SHOW/](https://www.irishtimes.com/health/2022/08/18/more-than-110000-children-on-waiting-lists-for-therapies-and-disability-services-figures-show/)
8. HECKMAN JJ AND MASTEROV DV (2007) THE PRODUCTIVITY ARGUMENT FOR INVESTING IN YOUNG CHILDREN. APPLIED ECONOMIC PERSPECTIVE POLICY 29: 446-93. [HTTPS://WWW.NBER.ORG/PAPERS/W13016.PDF](https://www.nber.org/papers/W13016.pdf)
9. BETTER OUTCOMES, BRIGHTER FUTURES: THE NATIONAL POLICY FRAMEWORK FOR CHILDREN AND YOUNG PEOPLE, 2014-2020. [HTTPS://ASSETS.GOV.IE/23796/961BBF5D975F4C88AD01A6F5C8A47C4.PDF](https://assets.gov.ie/23796/961bbf5d975f4c88ad01a6f5c8a47c4.pdf)
10. GANNON B, NOLAN B. (2022). DISABILITY AND SOCIAL INCLUSION IN IRELAND. [HTTPS://NDA.IE/PUBLICATIONS/DISABILITY-AND-SOCIAL-INCLUSION-IN-IRELAND](https://nda.ie/publications/disability-and-social-inclusion-in-ireland)
11. SLAINTECARE REPORT (2017). HOUSES OF THE OIREACTHAS COMMITTEE ON THE FUTURE OF HEALTHCARE. [HTTPS://DATA.OIREACTHAS.IE/IE/](https://data.oireachtas.ie/ie/)
12. HSE (2016) A NATIONAL MODEL OF CARE FOR PAEDIATRIC HEALTHCARE SERVICES IN IRELAND. [HTTPS://WWW.HSE.IE/ENG/SERVICES/PUBLICATIONS/CLINICAL-STRATEGY-AND-PROGRAMMES/HEALTH-SERVICES-FOR-CHILDREN-IN-IRELAND-%E2%80%993-A-GUIDE-TO-WORKFORCE-PLANNING.PDF](https://www.hse.ie/eng/services/publications/clinical-strategy-and-programmes/health-services-for-children-in-ireland-%E2%80%993-A-GUIDE-TO-WORKFORCE-PLANNING.PDF)

