

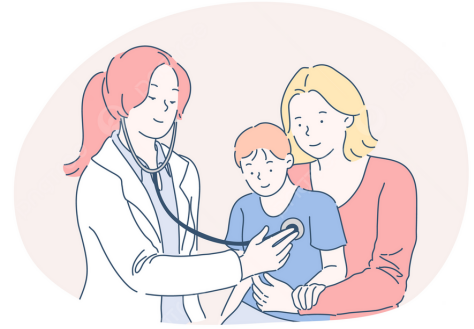
## Contact Details:

Emma (Clinic Co-ordinator): **086 8012360**  
St Mary's Health Centre: **021 4225680**

## How to find us?

NICHE, HSE Building, Harbourview Road,  
Knocknaheeny, Cork, T23 XY16.

The 202 bus from the city centre stops  
outside the Hollyhill Library across the road from  
NICHE



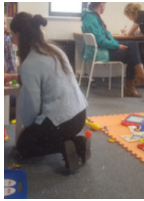
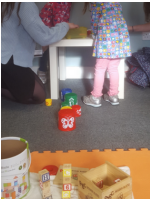
# KidScope

Community Based  
Paediatric Clinic for  
pre-school aged  
children



Dr Louise Gibson

Scan the  
QR code for  
more  
information



## GDPR Privacy Notice and Data Sharing

KidScope take the protection of the data we hold about you and your child seriously and will do everything possible to ensure that data is collected, stored, processed and retained in accordance with current data protection legislation.

The full privacy notice is available at the clinic. Please read the full privacy notice to see how KidScope will treat the personal information you provide. We will endeavour to keep your information secure and to prevent any unauthorised access.

If you have any questions about the privacy of your child's data; to update details we already have; or to request we stop contacting you please contact Emma at 086 8012360.



## What is Kidscope?

Kidscope is a childrens clinic which offers free health and developmental assessment and onward referral for pre-school children aged 0 to 6 years old living in Cork city northwest. It runs every Thursday during the academic year in Niche. It is led by Dr Louise Gibson and a team of medical students.

## Why Kidscope?

You, your doctor or your Public Health Nurse have some concerns surrounding your child's health, development or growth.

## What happens at Kidscope?

You will be asked to complete a questionnaire about your child's development at the start of the clinic.

A team of student doctors, supervised by the Paediatrician will weigh and measure and observe your child and talk to you about your child's health and any concerns that you have.

## Onward Referral:

The doctors seeing your child may recommend certain assessments or bloods are carried out.

Some children who have more needs may benefit from community or specialist services. If necessary your child will be referred to a specialist or brought back to the clinic for review. Kidscope can also help to link you with local services in the community such as Let's Grow Together or Springboard to support you as a parent.

## Other Information:

Each appointment is approximately an hour long.

Kidscope is a learning clinic, which means there will be student doctors from UCC in the clinic.

The clinic is run for parents and children and if you would rather not meet a student doctor please let us know when you arrive at the clinic.

If you need to cancel or reschedule please call **Emma at 086 8012360** or if you would like more information on Kidscope you can email **[emma@letsgrowtogether.ie](mailto:emma@letsgrowtogether.ie)**

